



# Innovating the Future of Airport Management



Powered by

**BARTHAUER**  
SOFTWARE





# “Application Performance and Security”

This application stands out for its exceptional performance and advanced security features. Equipped with a multilingual interface, it allows each user to select their preferred language, enhancing interactions in an international context. Additionally, its responsive design ensures seamless compatibility across computers, tablets, and smartphones, providing a smooth user experience with minimal loading times. Lastly, enhanced security is guaranteed through robust authentication mechanisms, encryption of sensitive data, and precise access control management, ensuring full traceability of activities.



SACOS was developed by **Barthauer Software GmbH** in partnership with **ACI Africa**. This application is designed to meet the requirements of modern airport infrastructures by providing an optimal user experience and efficient operations management.



## > Airport's Data

> This module serves as a centralized platform that integrates all essential information related to airport infrastructures. It provides comprehensive management of operational data, including ICAO and IATA codes, strategic locations, and airport capacities. Additionally, it compiles detailed information on critical assets such as runways, terminals, and other key facilities offering a global and precise overview of the infrastructure.



> Technical documentation management is optimized, allowing the addition of key documents such as blueprints, audits, and certificates, with automatic notifications for updates to ensure compliance and traceability. Furthermore, the commenting feature enhances collaboration among specialists, enabling seamless information exchange. The module also supports the export of status reports, ensuring rigorous monitoring and informed decision-making for efficient airport operations.

## > Inspections

> The inspection module ensures a systematic and in-depth monitoring of all airport operations. Designed for industry specialists, it organizes daily, monthly, and annual inspections, covering key operational areas such as runway zones, airport operations, ongoing works, GRF inspections, hazardous materials management, ARFF services, and office inspections in airside zones.

> This module incorporates advanced features, including automated data entry, seamless report export, automatic email notifications, visual integration of images into reports, and interactive mapping of detected anomalies. These tools ensure rigorous oversight and optimized operational management, meeting the high standards and regulatory requirements of aviation professionals.



## > Reports

> The reporting system is designed to collect and analyze strategic information, ensuring efficient data-driven decision-making. It enables the generation of various essential reports, including event reports, investigation reports, mandatory DCA reports, and bird strike impact reports. Each document can be easily exported and shared with relevant stakeholders, facilitating effective communication and compliance.

> Additionally, the system features an automated email notification function, configured according to predefined settings. This ensures that critical information reaches key recipients in real time, enhancing responsiveness and operational oversight.



## > Standard Operating Procedures (SOPs)

> SOPs (Standard Operating Procedures) are the cornerstone of the essential processes for the operation and safety of an airport. This advanced module enables the importation, storage, and centralized management of all documents related to critical procedures.

It incorporates features such as version control, audit trails for modifications, and automated alerts for updates, ensuring rigorous tracking of every change. Through this system, teams can quickly and securely access the necessary information to ensure compliance with international standards and internal protocols.



By facilitating coordination between different departments, this module enhances operational responsiveness and process reliability, thereby contributing to maintaining an optimal level of performance within the airport infrastructure.

## > Certification module : Efficient Airport Certification Workflow

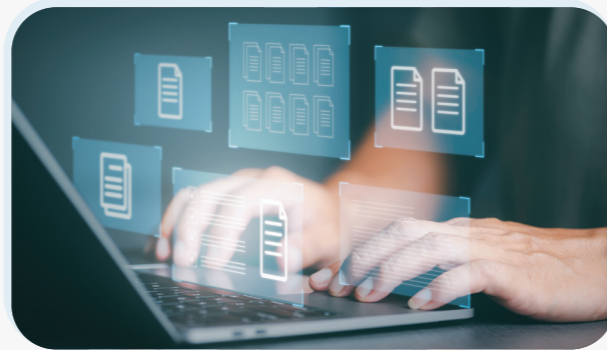
> The Airport Certification Module provides civil aviation authorities with a centralized platform to oversee airport certification. It incorporates a full inspection checklist addressing operational procedures, infrastructure, safety systems, and regulatory compliance. Non-conformities are systematically identified and documented. It enables the export of both inspection-specific reports and a comprehensive final report, providing a fully traceable, auditable, and streamlined certification workflow. The platform supports parallel multi-user collaboration, allowing teams to work simultaneously on the same process without compromising data integrity or workflow transparency.

This module features three integrated sub-modules:



## > Documentation

> The centralized document management module provides airport experts with optimized access to essential regulatory and technical documents. Through this solution, professionals can quickly retrieve ICAO annexes, manuals, ACI handbooks, as well as the entirety of national aeronautical regulations. The advanced search interface allows users to filter results by date, version, document type, or keywords, ensuring precise and rapid location of the required information.



> Additionally, the platform offers an intuitive online consultation experience, complemented by options for partial or complete document printing, providing specialists with appreciable flexibility in usage. A version control and modification history system guarantees traceability and continuous content updates, thereby enhancing compliance with operational standards. This integrated approach enables professionals to access critical information in real time, supporting informed decision-making in the airport domain.

## > Aeronautical Information Systems (AIS)

> This module ensures real-time connectivity to aeronautical information, providing professionals with immediate access to essential data. Through an intuitive interface, it allows for continuous consultation of reference publications such as the **AIP**, **SUP AIP**, **AIC**, and **NOTAMs**. This automatic synchronization with official sources guarantees the rapid and reliable dissemination of critical information, minimizing the risk of obsolescence and facilitating informed decision-making. Additionally, advanced filtering and customization features for notifications enable specialists to receive relevant updates according to their specific needs, thereby enhancing the safety and efficiency of airport operations.

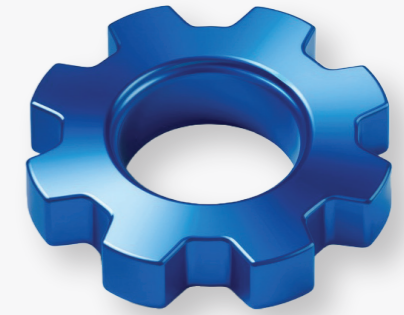
## > Geographical Mapping

> The integrated map provides airport specialists with dynamic and interactive management of geographical data. It enables precise identification and visualization of anomalies detected during inspections, thanks to a clear and structured interface that overlays cartographic data with intervention markers. Users benefit from direct access to documents related to airport assets, facilitating the consultation of metadata and maintenance history. Additionally, the offline mode functionality ensures the continuous availability of critical information, even without an internet connection, guaranteeing optimal reliability during field operations. This integrated system strengthens coordination and decision-making by providing a real-time overview of infrastructure and operational situations.



## > Configuration

> The configuration module offers **advanced** and **customized** control of user management and their access rights, ensuring a **secure** distribution of responsibilities within the airport environment. With an intuitive interface, administrators can create, modify, or delete accounts based on roles and authorization levels, ensuring granular management of access to different modules and sensitive data.



> This module also allows for precise configuration of email dispatch matrices, automating notifications related to inspections and reports. Notifications can be tailored according to specific criteria, such as the nature of the event, criticality level, or relevant recipients. This automation ensures fast and targeted communication, minimizing the risk of omission and ensuring optimal responsiveness to operational and regulatory challenges. By centralizing these parameters, the configuration module contributes to effective and secure management of airport processes.

## > Dashboard

> Interactive dashboards serve as a **strategic** tool for dynamic, real-time visualization of data from **inspections** and **operational reports**. Designed to meet the needs of airport industry specialists, they integrate detailed statistics and intuitive graphics, facilitating visual analysis of trends and discrepancies.

> With an ergonomic interface, users can filter and explore data based on various criteria, such as anomaly frequency, inspection distribution by area, or compliance rate with safety standards. This approach enables precise performance tracking, quick detection of malfunctions, and proactive management of operations.

> Additionally, the dashboards offer **advanced customization features**, allowing the data display to be adapted to the specific needs of each department or user. By providing a comprehensive and analytical view of airport activities, this module is a key tool for optimized decision-making, efficient resource allocation, and continuous improvement of operational processes.





## > A Multiplatform Solution for Unlimited Airport Management <

Step into the future of seamless connectivity with **SACOS**. Designed exclusively for tablets and computers, **SACOS** is available as both an app and web platform, ensuring effortless integration and consistent performance across your devices. Whether you're working on your tablet or computer, enjoy smooth transitions and a truly cohesive digital experience. Stay connected, stay productive, and let **SACOS** empower your workflow—anytime, anywhere.



> Smartphone

> **Tablet.**



> **Laptop.**



 **SACOS**  
SMART AIRPORT CERTIFICATION  
AND OPERATIONS SOFTWARE



## Reinventing Aeronautics with **Innovation and Performance**

In a constantly evolving industry where precision, efficiency, and innovation are paramount, the collaboration between **Barthauer** and **ACI Africa** has given rise to a cutting-edge solution. This advanced airport information system is designed to optimize resource management, streamline processes, and enhance decision-making, delivering smarter and more efficient airport management.

***‘Efficiency, Reliability, Innovation...  
Welcome to the future of airport management.’***

Reach us via

  Barthauersoftware

 +49 17 11 251140

 [info@barthauer.de](mailto:info@barthauer.de)

  ACI AFRICA

 +216 98541756

 [nkhiari@aci-africa.aero](mailto:nkhiari@aci-africa.aero)